

railway, metro & LRT | references



Argentina



Metro Buenos Aires, Line H

	ITEM	RAIL PROFILE	QUANTITY	YEAR	PLACE
railways	turnout	UIC54	2	2007	Buenos Aires
	switch		2		
crossing	2				
	turnout	UIC54	14	2012	Belgrano (BA)
metro	turnout	UIC54	22	2005-2010	Buenos Aires Subway
	switch		4		
	crossing		2		
	single crossover		3		
scissors crossover	2				
	turnout	54E1	19	2015-2016	Metro Buenos Aires
switch	9				
crossing	8				
single crossover	4				
double crossover	7				

Australia



East West

Australia

	ITEM	RAIL PROFILE	QUANTITY	YEAR	PLACE
railways	single turnout	60E1	55	2011-2012	East-West ARTC South Australia
	turnout (SNX, explosive hardened manganese monoblock and compound crossings)	60E1, AS60	75	2011-2014	Hunter Valley ARTC (Hexham LTTSF, 30TAL etc.)
	turnout	60E1	10	2014	Botany Port, Sydney
	40 kg rail		3	2014	Xstrata – small mine turnout
	set of switches swing nose catch point	AS60	19 4 4	2016-2019	Australia
	set of switches	AS60	2	2022	
	turnout	41E1	3	2022	
LRT	single turnout	60E1	6	2012	PTA (Perth Light Rail)
	single turnout	60E1	8	2013	Sydney Light Rail
	single crossover scissors crossover transition/twist rail	49E1	1 1 40	2017	Goald Coast

Belgium

	ITEM	RAIL PROFILE	QUANTITY	YEAR	PLACE
railways	turnout	EB50T	4	2009	Port of Athus
	turnout		8		Charleroi
	turnout crossing	50E2	24 2	2019-2020	De Lijn

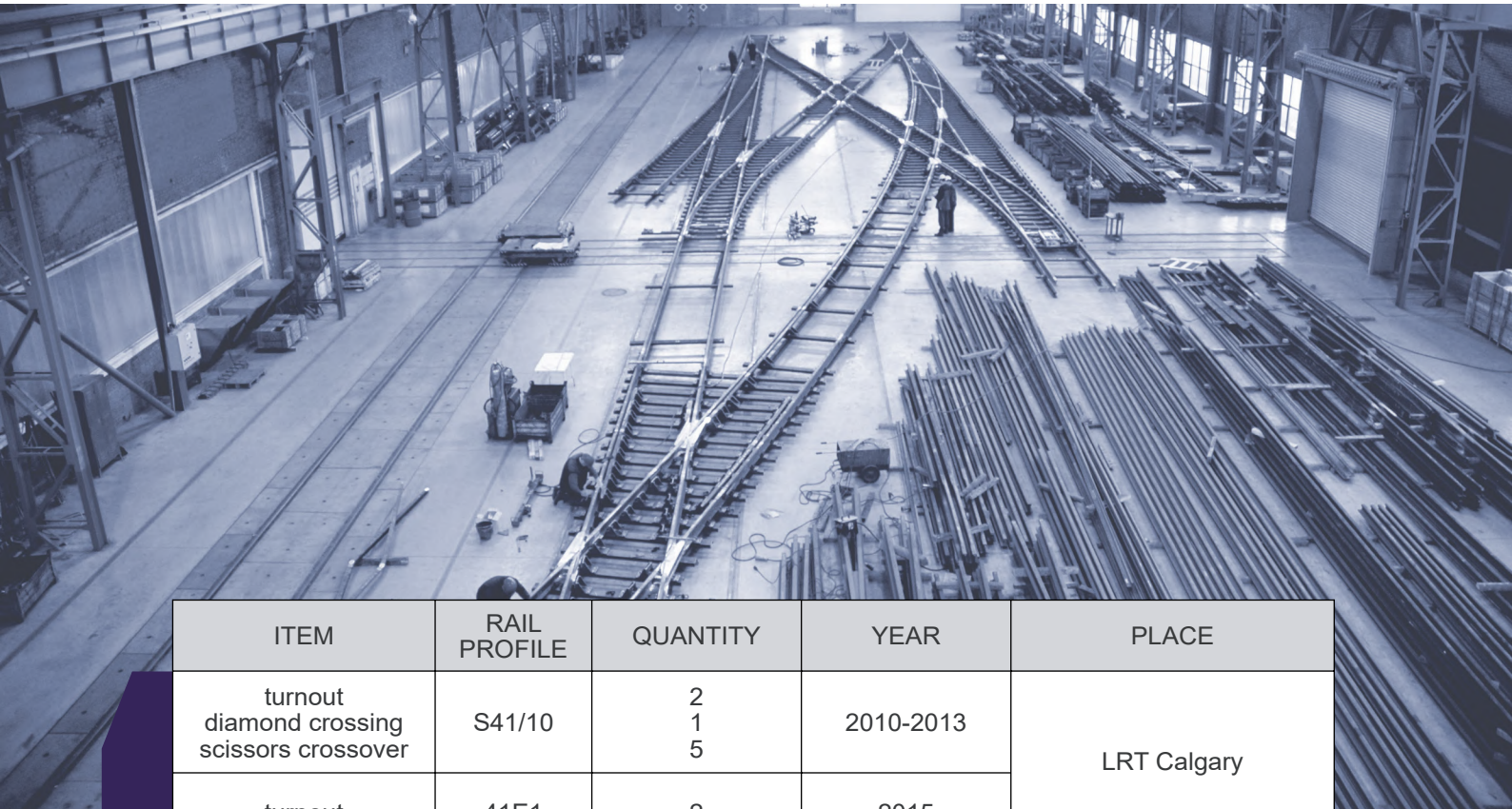
Brazil



Metro São Paulo, Line 5

ITEM	RAIL PROFILE	QUANTITY	YEAR	PLACE
turnout single crossover	UIC60	43 12	2013-2014	Metro São Paulo (Line 5)

Canada



LRT

ITEM	RAIL PROFILE	QUANTITY	YEAR	PLACE
turnout diamond crossing scissors crossover	S41/10	2 1 5	2010-2013	LRT Calgary
turnout	41E1	2	2015	
turnout single crossover double crossover Mn crossing spare parts	115RE	66 16 4 10 4	2016-2022	LRT Toronto
turnout diamond crossing crossover	115RE	7 3 4	2012	LRT Edmonton
RST metal crossing		6	2020	
Dillidur metal crossing		4	2022	
expansion joints	115RE	6	2023	LRT Montreal
half switches	54E1	17	2024	LRT Vancouver

Croatia

railways

ITEM	RAIL PROFILE	QUANTITY	YEAR	PLACE
transition rails	60E1	100	2019	Croatia

Czech Republic



Prague - Libeň

ITEM	RAIL PROFILE	QUANTITY	YEAR	PLACE
turnout	S49	> 2000	up to 2023	Railways of the Czech Republic
turnout	UIC60	> 1000		
turnout	R65	> 100		
turnout spare parts	S49	31 > 100	2019-2024	Prague Metro
turnout (slab track)	49E1	1	2022	Opatovice nad Labem

Germany



railways

ITEM	RAIL PROFILE	QUANTITY	YEAR	PLACE
single crossover	49E1 60E1 54E3	1	2016	Müllheim
turnout		2	2017	Mannheim
single crossover		1	2017	Görlitz
crossing turnout single crossover double crossover		1 1 1 2	2018-2023	Düsseldorf
turnout crossing		2 1	2019	Kassel
turnout crossing spare parts		22 3 48	2019-2024	Bremen
turnout crossing single crossover		1 1 3	2018-2024	Köln
turnout single crossover		5 2	2019-2021	Berlin
turnout		1	2020	Stuttgart
single crossover turnout double slip turnout		4 12 2	2021-2024	Nürnberg
turnout switch		1 2	2023	Krefeld
single crossover double crossover		1 1	2023-2024	Duisburg
tongue		30	2024	Essen
stockrails		60E2A1 54E3	864 100	2023-2024

Greece

	ITEM	RAIL PROFILE	QUANTITY	YEAR	PLACE
railways	turnout	S49	5	2006-2009	Greece
	turnout	UIC60	61		Athens
	transition rail	UIC60/UIC54	88		Greece

Indonesia



LRT Palembang

	ITEM	RAIL PROFILE	QUANTITY	YEAR	PLACE
LRT	turnout	UIC54	40	2011-2013	PT.KAI
	turnout single crossover double crossover rail expansion joint	54E1	14 13 2 4	2017-2018	LRT Palembang
	turnout		2	2020	Tanjung Enim, Sumatra

Italy

	ITEM	RAIL PROFILE	QUANTITY	YEAR	PLACE
railways	crossing set of switches	UIC60	3 2	2011	Italy
	turnout	S60UNI	2 1	2015	Ferrovie del Gargano Ferroviennord
	switch rail	60E1A2	42 14	2012 2017	Italy
	transition rail	60E1/50E5	> 600	2013-2024	Ferroviennord
	bainitic crossing	UIC60	3	2020	
	transition rail	60E1/50E5	16	2024	ATM (Milan)

Mauricius

	ITEM	RAIL PROFILE	QUANTITY	YEAR	PLACE
railways	transition rail	50E6/54G1/IRG	123	2019	Mauricius
			71	2020-2021	

Monte Negro

	ITEM	RAIL PROFILE	QUANTITY	YEAR	PLACE
railways	turnout	S49	56	2006-2012	Railways of Monte Negro

Netherlands

	ITEM	RAIL PROFILE	QUANTITY	YEAR	PLACE
metro	half set of switches crossing	49E1	5 1	2018	Metro Amsterdam

Norway

	ITEM	RAIL PROFILE	QUANTITY	YEAR	PLACE
railways	turnout	S49	12	2004-2006	Oslo Sporveien
	turnout	60E1	3	2001-2013	Narvik
	turnout Mn crossing	60E1	6 1	2014-2015	Narvik (harbour, heavy haul)
	spare parts (Mn crossing, tongue, stock rail)	60E1	8	2015	Narvik
			16	2017	
			14	2021	
	half set of switches Mn crossing		8 3	2023	
half set of switches		8	2024		

Philippines

	ITEM	RAIL PROFILE	QUANTITY	YEAR	PLACE
railways	turnout	EB50T	20	2005-2006	Manila Metro
	diamond crossing half set of switches common crossing	50E2	3 13 2	2017-2018 2019 2020	Philippines
	crossing half set of switches	50E2	5 15	2023	Philippines

Portugal

	ITEM	RAIL PROFILE	QUANTITY	YEAR	PLACE
railways	turnout	UIC54	1	2023	O.J.E. LOGISTICS – ENTRONCAMENTO S.A.

Qatar

	ITEM	RAIL PROFILE	QUANTITY	YEAR	PLACE
LRT	turnout expansion joint	49E1	28 18	2015	Qatar

Slovakia



Nové Mesto nad Váhom

	ITEM	RAIL PROFILE	QUANTITY	YEAR	PLACE
railways	turnout	R65	> 100	up to 2023	Railways of Slovakia
	turnout	S49	> 300		
	turnout	UIC60	> 400		

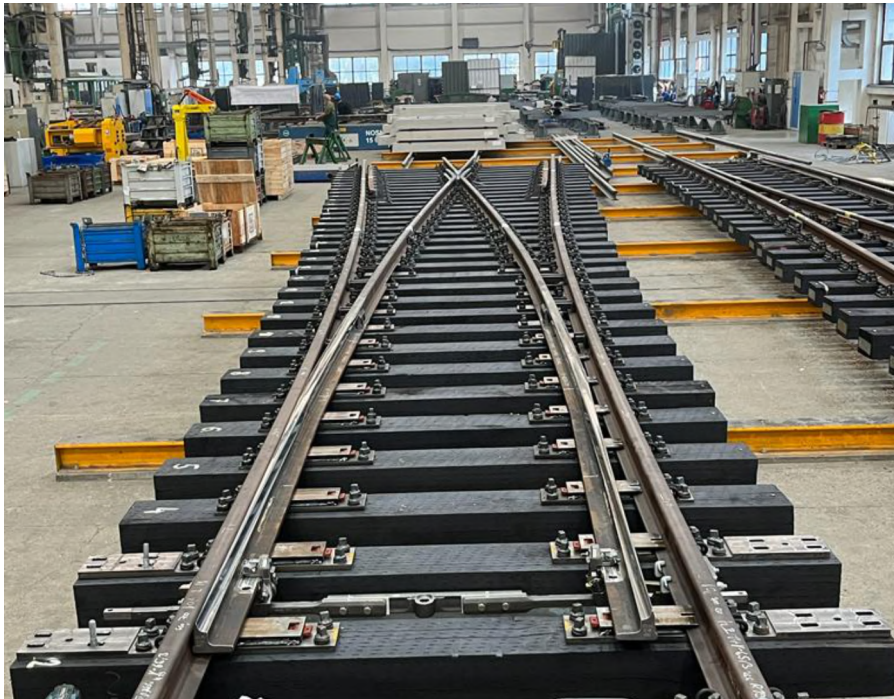
Sweden



3-way turnout in Solna (Stockholm)

	ITEM	RAIL PROFILE	QUANTITY	YEAR	PLACE
railways	turnout	BV50	5	2012-2014	Sweden
	3-way turnout		2	2013-2014	Göteborg
	3-way turnout	50E3	1	2016	Borlänge
	turnout		2	2016	Lulea
	set of switches		8	2016-2017	Sweden
	switch rail	54E1A2	54	2016-2017	Sweden
	3-way turnout	50E3	1	2019	Borlänge
	half set of switches		1		
	3-way turnout		1	2020	Solna
	tongue stock rail	54E1A2/50E3	19 19	2020	Ystad
	3-way turnout	50E3	1	2021	Borlänge
	tongue, stock rail		11		
	single turnout half set of switches	50E3	3 2	2024	Sweden

Switzerland



	ITEM	RAIL PROFILE	QUANTITY	YEAR	PLACE
railways	turnout scissors crossover	S49 46E1	3 1	2004-2014	Rhätische Bahn Railways
	turnout turnout turnout	S49	2 12 11	2004-2006	Brienz Rothorn Railway Matterhorn Gotthard Railway Aigle Transporting Company
	half set of switches crossing	UIC60	4 5	2013	SBB
	turnout	46E1	2 3	2021 2023	Switzerland

Thailand

	ITEM	RAIL PROFILE	QUANTITY	YEAR	PLACE
railways	set of switches	49E1	5	2017	Thailand

Turkey



Ankara Metro

	ITEM	RAIL PROFILE	QUANTITY	YEAR	PLACE
railways	turnout switch crossing	S49	3 3 1	2005-2007	Istanbul
	turnout scissors crossover	UIC60	18 2	2009-2010	Turkish State Railways
	turnout	S49	2	2010	Derince Port
	switch crossing	S49, UIC60	> 100	2011 till now	Turkish State Railways
	half set of switches	49E1 60E1	35 20	2016	
	tongue	49E1A3	30	2019	
metro	single crossover	S49	4	2010	Izmir Metro
	turnout double crossover	54E1	30 1	2016-2017	Ankara Metro
	turnout crossing double crossover		77 4 2	2017-2018	Istanbul Metro

